

Always striving for eco-friendly,
comfortable kitchens for all users.

Single phase
220V-240V
50Hz

User friendly Pillar-less design commercial refrigerator

- Smooth in & out
large items can be Stored easily
- Effective utilization of full space

Easy Cleaning

- The rounded corners enable easy and
thorough cleaning. This makes daily clean-up
easier and maintains refrigerator hygiene.



SUF-1261HP(E)

**600mm in depth
WITHOUT forced evaporation**

*The above photo is just for reference.

If there is any variance, please kindly refer to product spec. sheet.

Technical data

Model	External dimension	Capacity	Performance
SUF-1261HP(E)	W1200 x D600 x H800 (mm)	214 L	-25 °C ~ -15 °C
SUF-1561HP(E)	W1500 x D600 x H800 (mm)	296 L	-25 °C ~ -15 °C
SUF-1861HP(E)	W1800 x D600 x H800 (mm)	377 L	-25 °C ~ -15 °C



Using refrigerant
R404A



Voltage range is
220-240V/50Hz



Center pillarless



Heater defrost



Bottom shelf is
standard



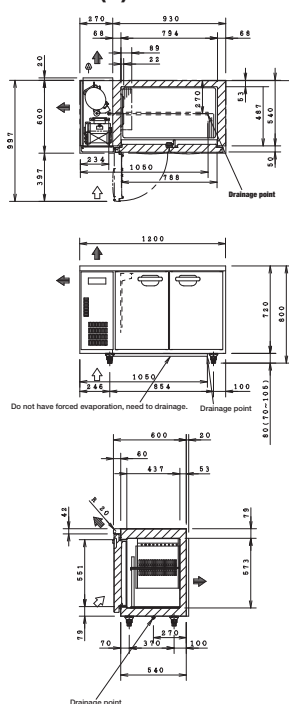
Caster wheel
(option)

Specification

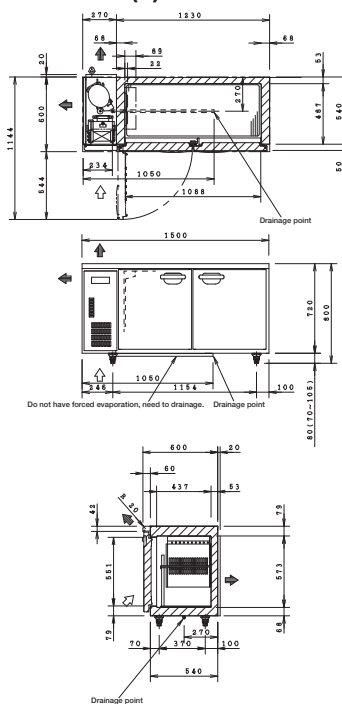
Model		SUF-1261HP(E)	SUF-1561HP(E)	SUF-1861HP(E)
Dimensions (W x D x H) (mm)	External	1200 x 600 x 800	1500 x 600 x 800	1800 x 600 x 800
	Internal	794 x 437 x 573	1094 x 437 x 573	1394 x 437 x 573
Capacity		214 L	296 L	377 L
Performance		-25 °C ~ -15 °C		
Compressor		Obturation Completed Danfoss SC15CL	Obturation Completed Danfoss SC15CL	Obturation Completed Danfoss SC15CL
Refrigerant		R404A		
Defrost		Mini Computer controlled, Auto heat defrost		
Power source		Single phase, 220 ~ 240 V, 50 Hz		
Power consumption	Operation	400 W	585 W	600 W
	Defrost	346 W	352 W	368 W
Accessories		2 Net rack, 5 net rack support. Condenser Filternet, figure thermometer		2 Net rack, 9 net rack support. Condenser Filternet, figure thermometer
Weight		78 kg	88 kg	101 kg

Dimensional outline drawing (mm)

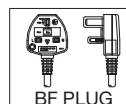
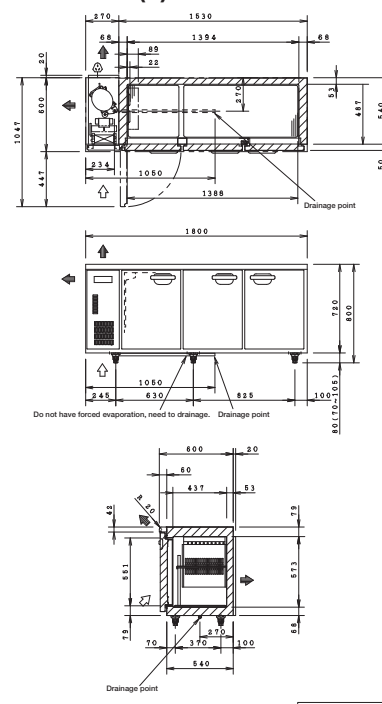
SUF-1261HP(E)



SUF-1561HP(E)



SUF-1861HP(E)



Safety Precaution

- All of our products in this catalog are designed for commercial use.
- Please consult the operation & installation manual before use and operate the product correctly.
- Please consult a Panasonic agent regarding product installation.
- These products are for indoor use only, do not use them outdoors.
- Please don't use these products for unintended purpose. Doing so could cause an accident.
- Please take measures to prevent falls.
- Do not use the products to store volatile or flammable substances such as benzene or alcohol cylinders. Doing so could cause an accident.

※ All pictures are simulated.

※ Design and specification are subject to change without prior notice.



SHUN HING TECHNOLOGY CO., LTD.

9/F, Peninsula Centre, 67 Mody Road, Tsimshatsui East, Kowloon, Hong Kong

Hotline

Tel: 2313 0666

Maintenance & Service

Tel: 2570 5384



Product Details